

# GET OUT THERE AUTO LOAN CAMPAIGN



WEBSITE



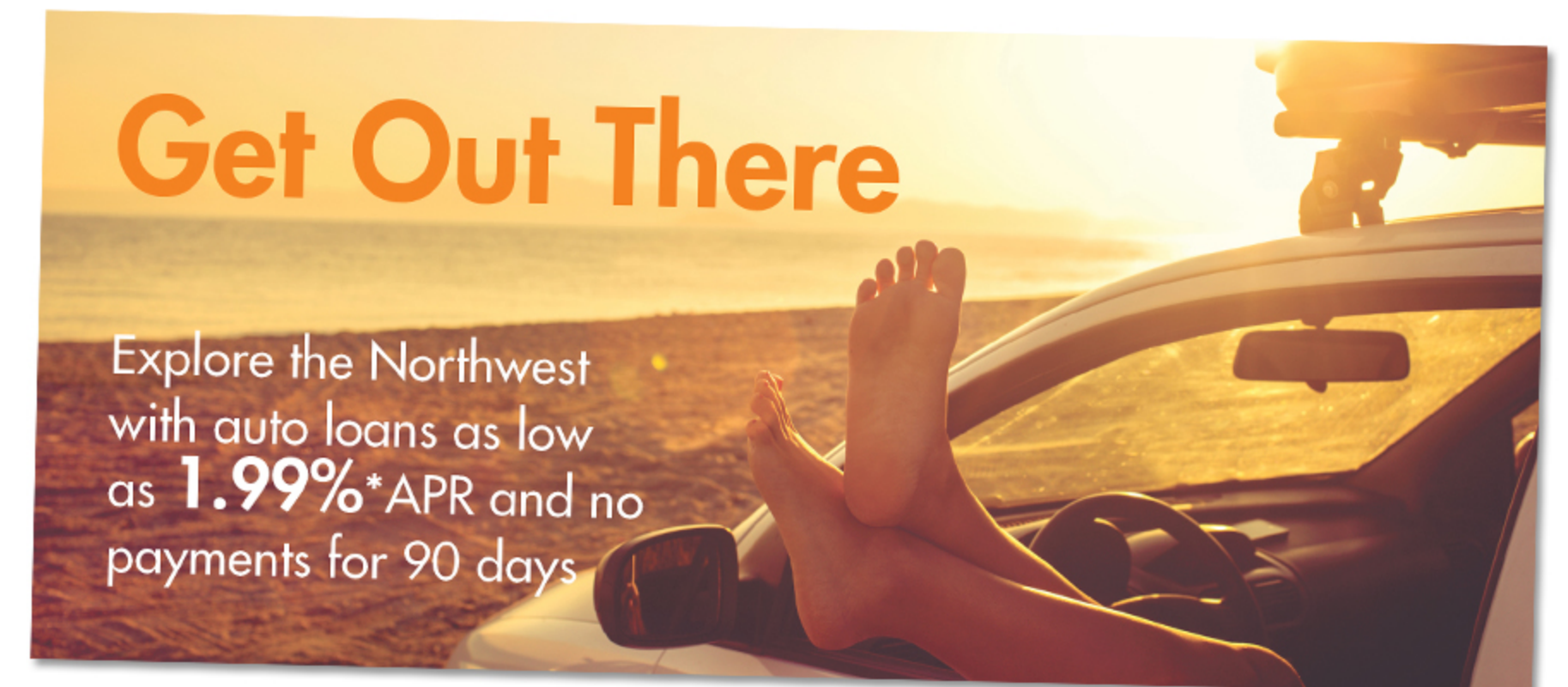
PANDORA AD



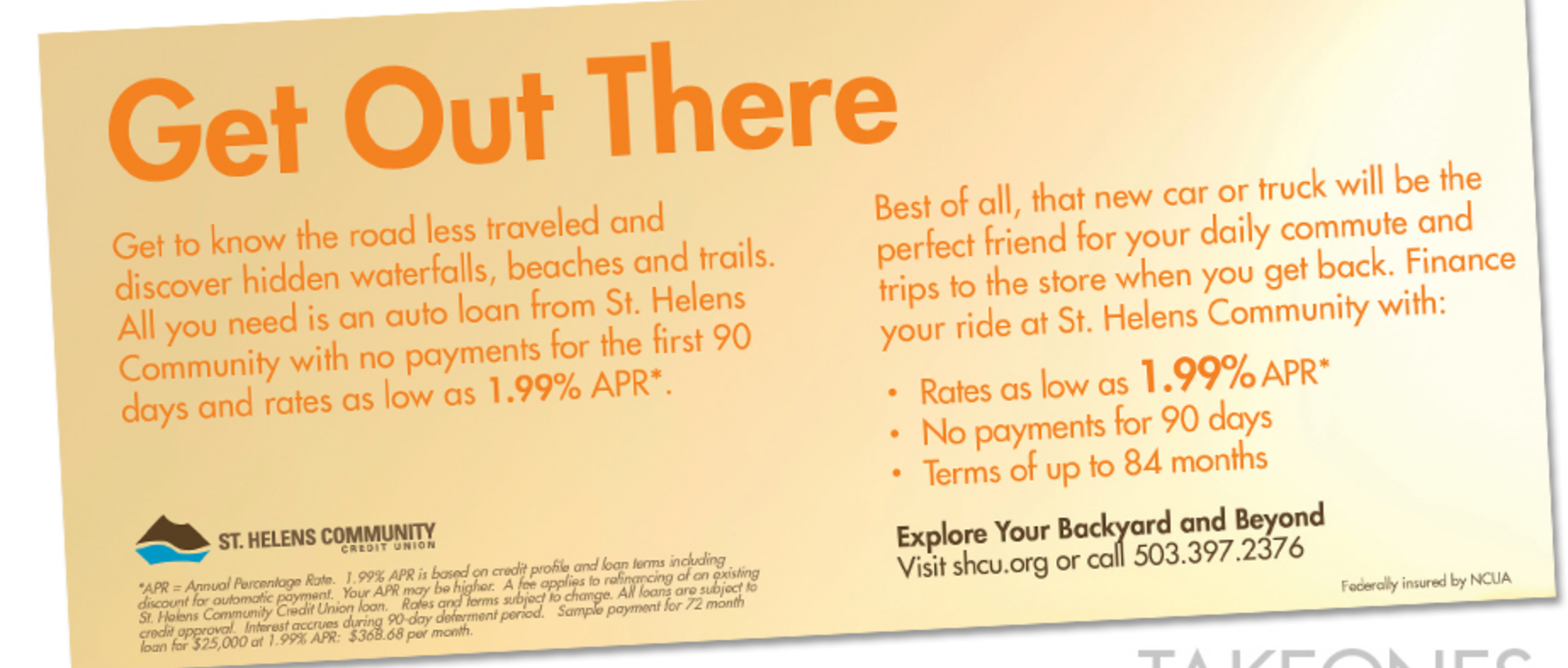
MOBILE  
SPLASH SCREEN



BRANCH  
SCREENS



BILLBOARD



TAKEONES

# Get Out There

Get to know the road less traveled and discover hidden waterfalls, beaches and trails.

- Rates as low as **1.99%** APR\*
- No payments for 90 days
- Terms of up to 84 months

**Explore Your Backyard  
and Beyond**

Visit [shcu.org](http://shcu.org) or call 503.397.2376



**ST. HELENS COMMUNITY**  
CREDIT UNION

\*APR = Annual Percentage Rate. 1.99% APR is based on credit profile and loan terms including discount for automatic payment. Your APR may be higher. A fee applies to refinancing of an existing St. Helens Community Credit Union loan. Rates and terms subject to change. All loans are subject to credit approval. Interest accrues during 90-day deferment period. Sample payment for 72 month loan for \$25,000 at 1.99% APR: \$368.68 per month.

Federally insured by NCUA

LOBBY POSTERS

# Get Out There

Explore the Northwest with auto loans as low as **1.99% APR\*** and no payments for 90 days



## Get Out There

Get to know the road less traveled and discover hidden waterfalls, beaches and trails. All you need is an auto loan from St. Helens Community with no payments for the first 90 days and rates as low as 1.99% APR\*.

- Rates as low as **1.99% APR\***
- No payments for 90 days
- Terms of up to 84 months

### Explore Your Backyard and Beyond

Apply today at [shcu.org](http://shcu.org), stop by any branch or call 503.397.2376

\*APR = Annual Percentage Rate. 1.99% APR is based on credit profile and loan terms including discount for automatic payment. Your APR may be higher. A fee applies to refinancing of an existing St. Helens Community Credit Union loan. Rates and terms subject to change. All loans are subject to credit approval. Interest accrues during 90-day deferment period. Sample payment for 72 month loan for \$25,000 at 1.99% APR: \$369.68 per month.

 **ST. HELENS COMMUNITY CREDIT UNION**  
P.O. Box 537  
St. Helens, OR 97051

Federally insured by NCUA

POSTCARD